

A light blue silhouette of a world map is centered in the background. A thick yellow diagonal stripe runs from the bottom left towards the top right, crossing the map. The text 'TMS' is prominently displayed in the center of the map, enclosed in a yellow oval.

TMS

LITE

since 2004

www.tms-lite.com

TMS-LITE

Special Lens (360° deg) Application

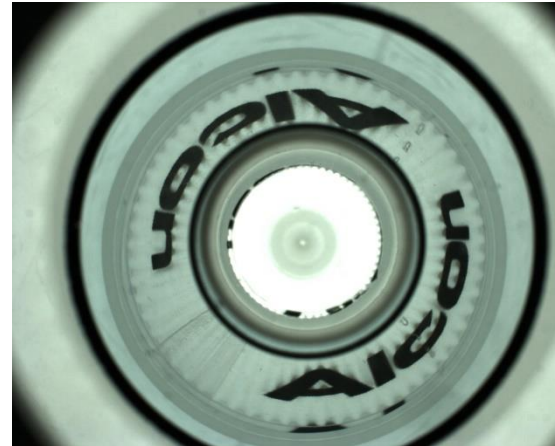
Introduction

TMS-Lite special lens is also known as 360° deg lens which has the effect to inspect the OUTER and INNER of an object by using 1 camera.



Outer inspection Lens

Below is the image of the lens and the result image of the lens capture.



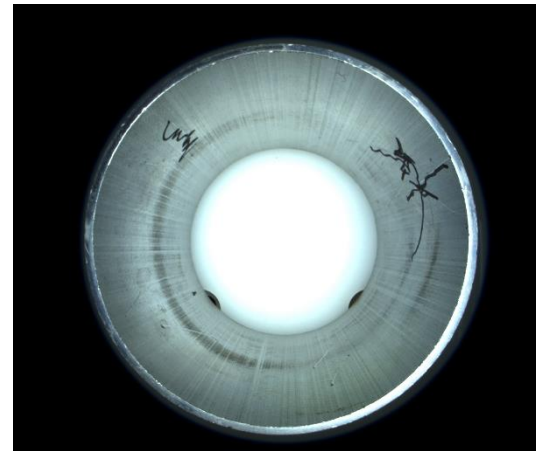
OCR inspection at the bottle neck. (This image need to unwrapped to proceed for OCR inspection)



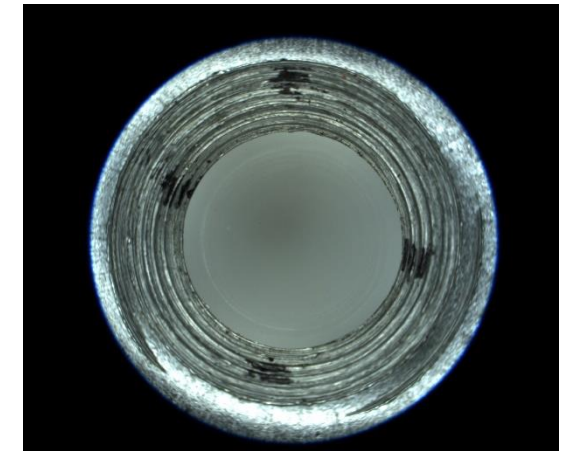
“Vitagen” seal inspection for checking the seal condition.

Inner inspection Lens

Below is the image of the lens and the result image of the lens capture.



To inspect the mark / scratch inside the item.



Nut track inspection for checking the black spot.

CONTACT US



+604-6468428



sales@tms-lite.com



**No. 2A-2, Tingkat Kenari 5, Desaria, Sungai Ara
11900 Bayan Lepas, Penang, Malaysia**

THANK YOU



since 2004

www.tms-lite.com

